



As a global enterprise, HSG sticks to providing professional and convenient service support to customers at home and board

- Professional Training**  
Multiple technical training services and free operation training are provided for customers and dealers in a timely manner.
- Efficient Support**  
Humanistic service model, online services and 7\*24 hotline to offer solutions and assistance.
- Optimized Transport**  
Multi-channel transport solutions and a professional transport solution team providing various transport cases to satisfy the demand of customers and save transportation fees.
- Sufficient Accessories**  
Highly efficient accessory delivery service; multiple network inventories jointly respond to accessory demand, shortening customers' waiting times and accelerating production.
- Careful Services**  
Domestic door-to-door service and free proofing, with over 100+ dealers providing efficient and convenient services.



Website

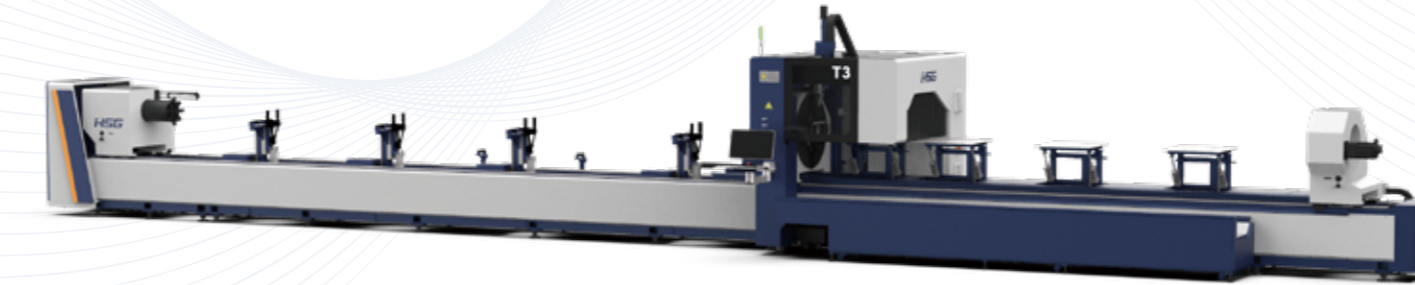


Facebook



Youtube

Headquarters Add.: No. 4, Anye Road, Shunde District, Foshan, Guangdong, China  
Website: www.hsglaser.com  
Email: info@hsglaser.com  
Tel: +86 757-66833906



# T Series

Three-chuck Heavy-duty Tube Laser Cutting Machine

## Company Culture

- SLOGAN**  
Shape Metal, Shape Trust
- MISSION**  
To support the high-speed growth of our customers
- VISION**  
To be a world-leading provider of metal shaping equipments & comprehensive solutions

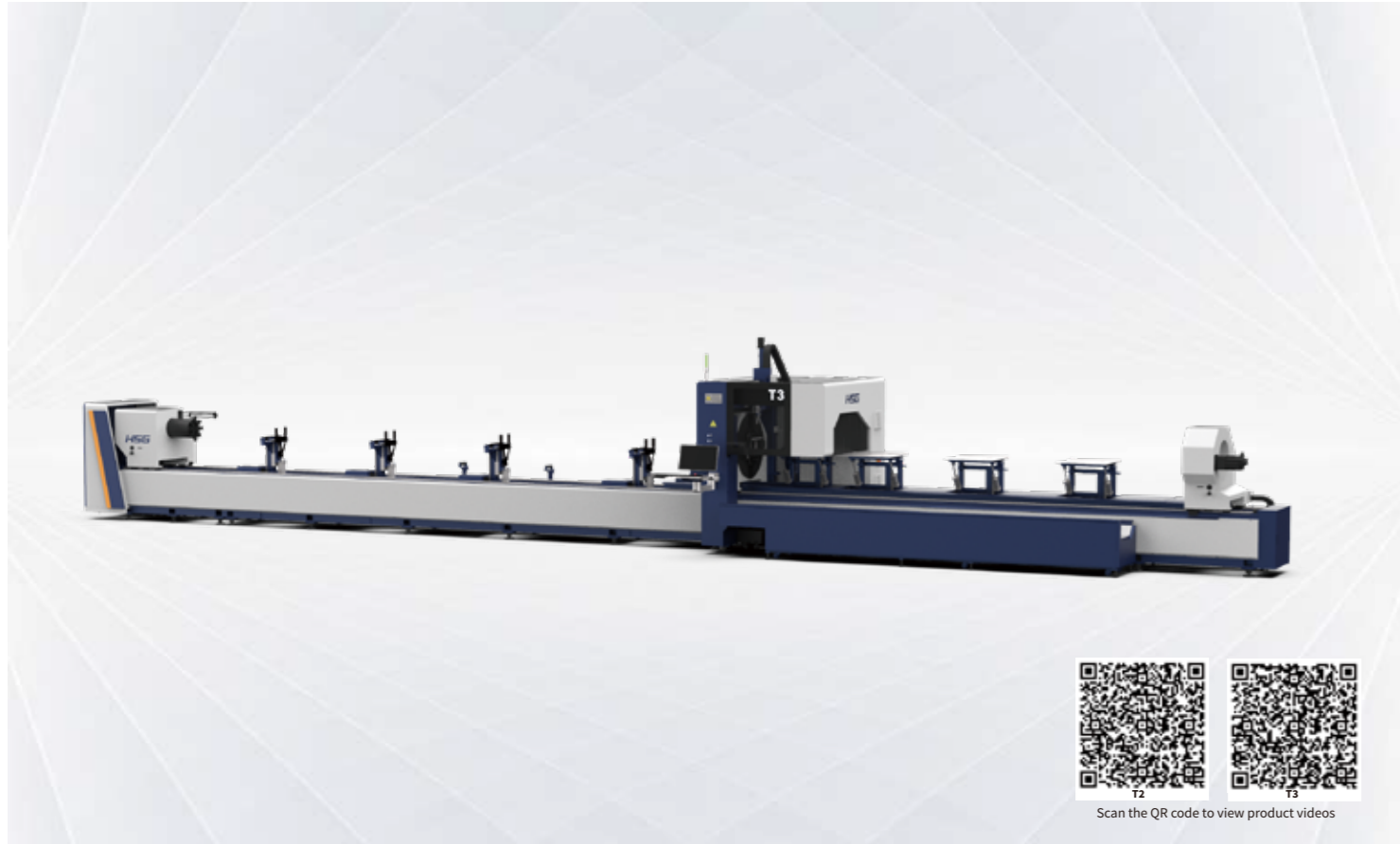
## Company Profile

<b>19</b> Global Branches	<b>100+</b> Countries Covered	<b>30+</b> Global Service Centers
<b>5</b> Manufacturing Bases	<b>8,000+</b> Annual Capability	<b>135,000m<sup>2</sup></b> Occupied Area



# T Series 3000-6000W

## Three-chuck Heavy-duty Tube Laser Cutting Machine



Scan the QR code to view product videos

### Technical Parameters

Technical Parameter	T2	T3
Power	3000-6000W	3000-6000W
Max. Linkage Speed	100m/min	80m/min
Rotating Speed of Chucks	100r/min	80r/min
Max. Linkage Acceleration	1G	0.8G
X/Y-axis Positioning Accuracy	±0.03mm/m	±0.05mm/m
X/Y-axis Repositioning Accuracy	±0.03mm	±0.03mm
*Tailing Length	0mm	0mm
Cutting Capacity	Round tubeΦ20 - Φ240mm Square tube□20*20 - □240*240mm Rectangular diagonal≤330mm	Round tubeΦ20 - Φ350mm Square tube□20*20 - □350*350mm Side length: 20-350mm
Weight of Single Tube	300kg	600kg
Dimensions with Semi-Auto (L*W*H)	16950*5000*3000mm	19000*5000*3000mm
The range of pipe material	1000-7000mm	1000-9000mm

\*Only when the nesting material is reasonable can be achieved.  
\* Machine appearance, technical parameters, function description, data comparison shown in this page are from HSG in-house laboratory.  
All testing results and experimental data shall be subject to real machine.

### High-precision Cutting With Independent Servo Follow-up Support

- 9m loading machine bed is equipped with independent and high-sensitivity servo follow-up support for strong support to heavy tubes, satisfying highly precise cutting on the horizontally.
- 6m unloading machine bed is also equipped with independent servo follow-up support, combing with intelligent unloading model of the system to achieve smooth blanking of tubes up to 6 meters.

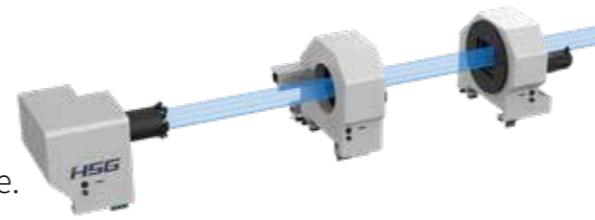


### Intelligent Bus Operating System

- Various auxiliary functions of tube laser cutting machines to satisfy multiple processing demand
- T2 series is equipped with professional nesting software to achieve efficient management of production progress and price calculations.

### Movable Triple Chuck for High Load Capacity

- The T3 is equipped with square and round chucks as standard, with a load capacity of 600kg, supporting 20-350mm tubes.
- Adopt two front and one rear chuck combination to achieve higher load bearing.
- C3 is a hollow chuck, which is easy to cut the whole tube.
- Movable three-chuck structure with short tail material cutting of chuck jump



### HSG-X Bus Control System

- HSG-X control system is bus-based and developed by HSG Laser. With intelligent and easy-to-operate service, it can offer users effective solutions to address problems of difficult operation, low efficiency and high costs.

### Tube Splicing Technology

- The operating control offers 50+ kinds of tube splicing patterns, for convenience of subsequent welding, such as splicing of male and female head of square tube, 90° arc splicing, splicing of round tube tee, splicing of cut-through holes, 45° splicing of hexagon, splicing of angle iron and channel steel, etc.

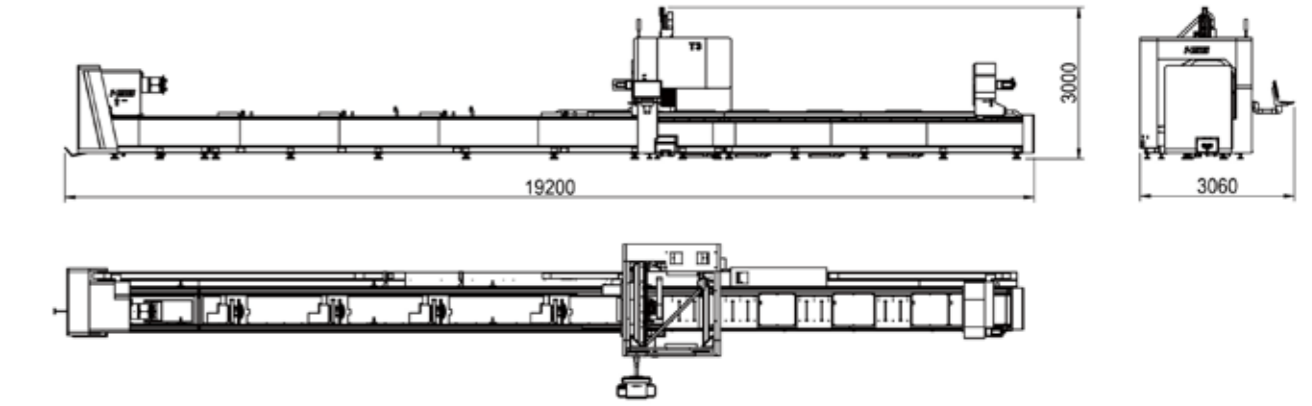


### Multi-functional Loading Rack for Fast Loading (Optional)

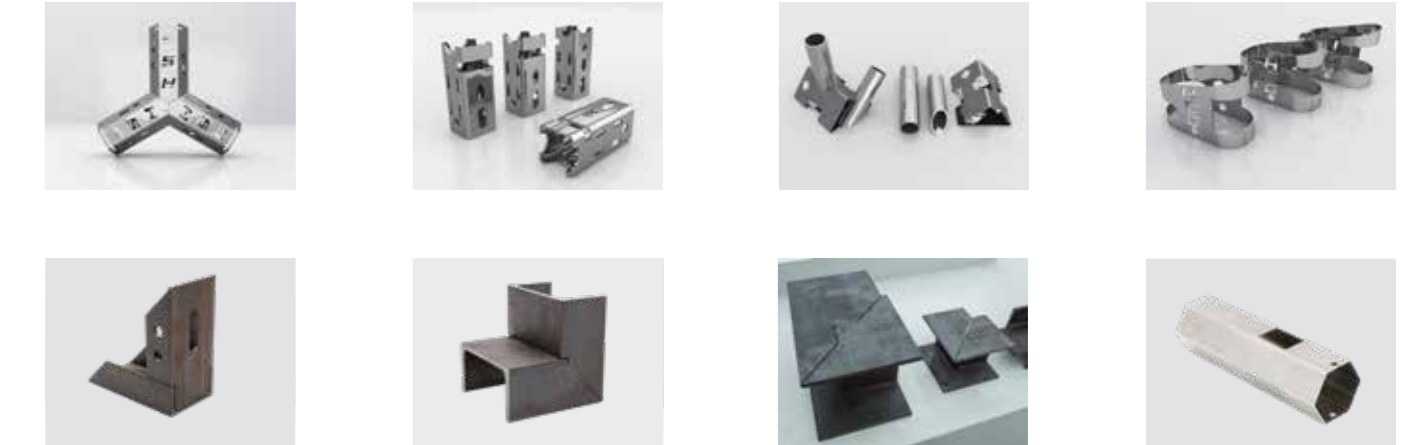
- Optional multifunctional loading frame can fulfill the automatic loading of 6-9 meters round tube, square tubes, steel sections and other tubes, achieving rapid loading of tubes, saving labor costs and improve productivity.

### Machine Foundation

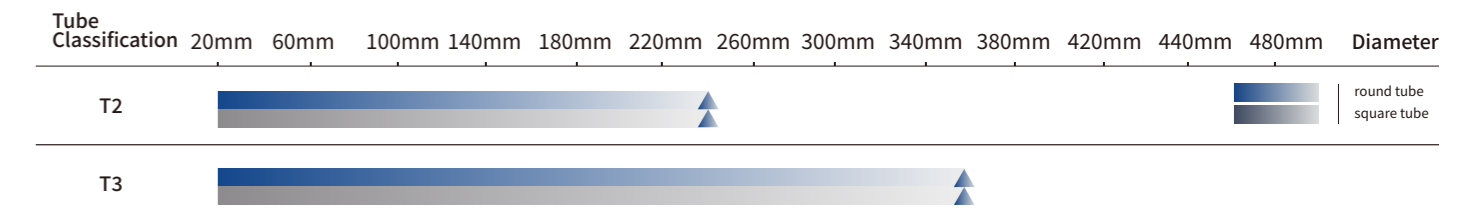
\*The marked size has about 10mm error  
\*Model: T3  
\*The dimensions of the standard configuration of the machine are for reference only.  
Please refer to the three views of the order configuration for the actual machine dimensions.



### Cutting Samples



### Cutting Capacity



The actual machines shall prevail and above data & pictures are only for reference.